

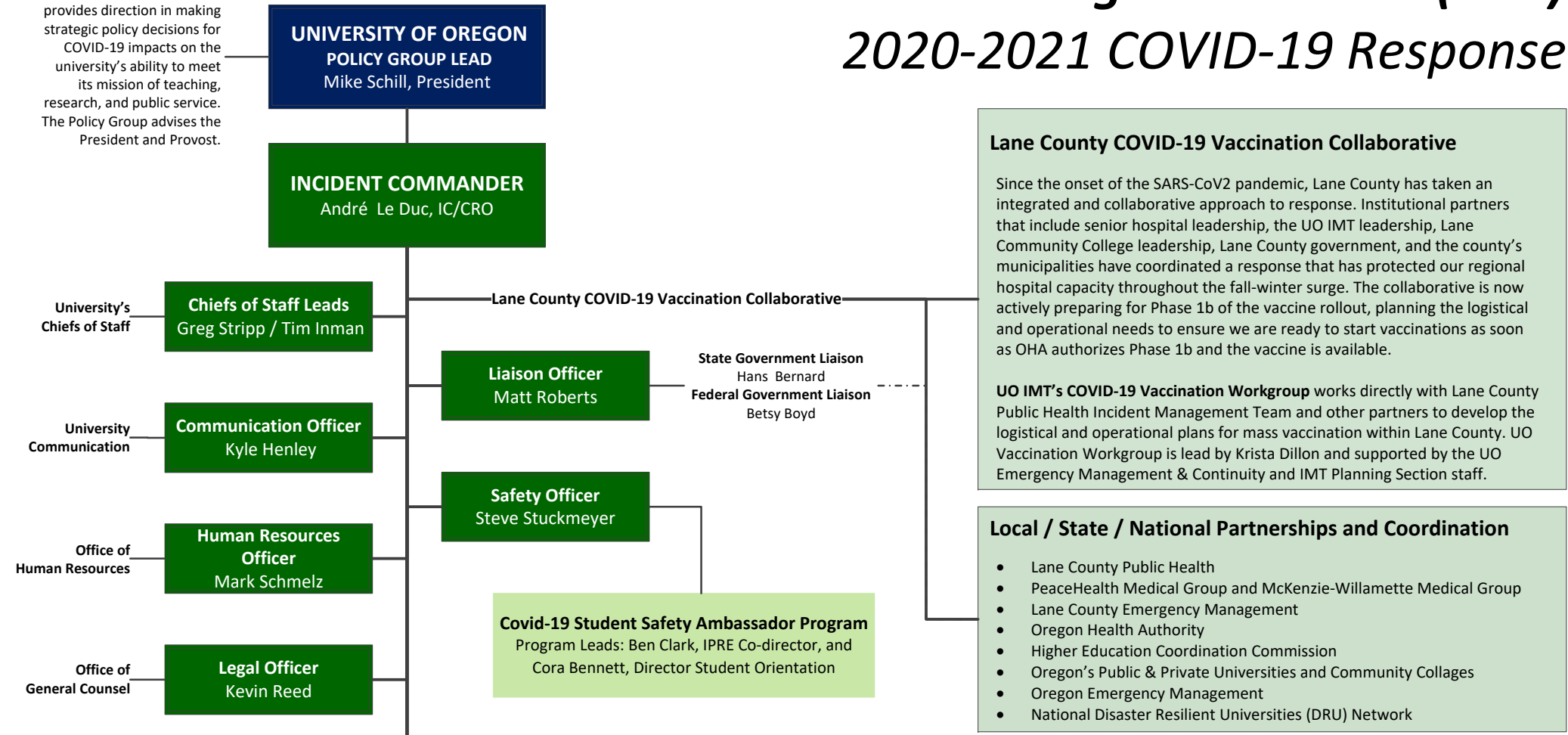
# Incident Management Team (IMT)

## 2020-2021 COVID-19 Response

### IMT COVID-19 Objectives:

- 1.) Reduce the likelihood of COVID-19 illness among students, faculty, staff, and guests of the University of Oregon by updating and maintaining the COVID-19 Health and Safety Operations plan as needed and by addressing the evolving situation.
- 2.) Implement comprehensive testing and contact tracing programs for the university in partnership with Lane County Public Health and Oregon Health Authority.
- 3.) Develop comprehensive COVID-19 Phase 1b vaccination operational plans with Lane County Public Health and the Lane County COVID-19 Vaccination Collaborative.
- 4.) Develop agile and equity-minded strategies and direct action to minimize the disruption to our students, faculty, and staff through effective communication, engagement, academic planning, research, and service.
- 5.) Keep the campus informed of new developments, Oregon Health Authority and CDC guidance, and the university's action to mitigate and respond and maintain operations.
- 6.) Document the financial impacts of the COVID-19 illness on the university's operations, develop financial scenarios and mitigation strategies to aid in the continuity and recovery efforts, and protect its long-term financial stability.

**Policy Group**  
The IMT Policy Group provides direction in making strategic policy decisions for COVID-19 impacts on the university's ability to meet its mission of teaching, research, and public service. The Policy Group advises the President and Provost.

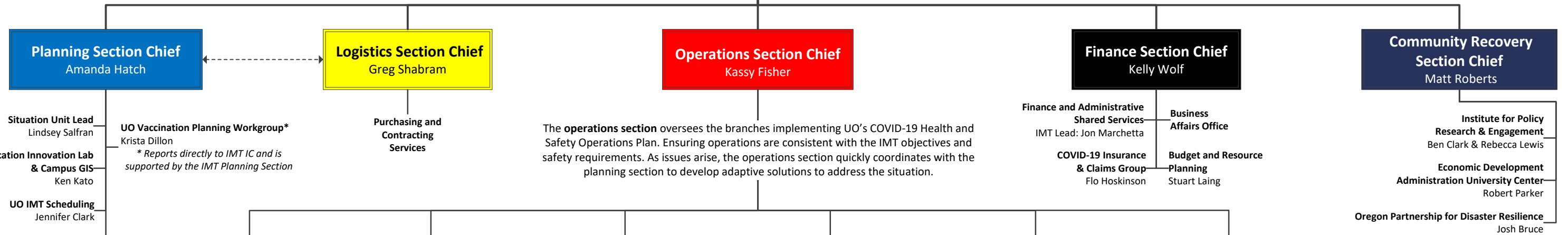


**Lane County COVID-19 Vaccination Collaborative**

Since the onset of the SARS-CoV2 pandemic, Lane County has taken an integrated and collaborative approach to response. Institutional partners that include senior hospital leadership, the UO IMT leadership, Lane Community College leadership, Lane County government, and the county's municipalities have coordinated a response that has protected our regional hospital capacity throughout the fall-winter surge. The collaborative is now actively preparing for Phase 1b of the vaccine rollout, planning the logistical and operational needs to ensure we are ready to start vaccinations as soon as OHA authorizes Phase 1b and the vaccine is available.

**UO IMT's COVID-19 Vaccination Workgroup** works directly with Lane County Public Health Incident Management Team and other partners to develop the logistical and operational plans for mass vaccination within Lane County. UO Vaccination Workgroup is lead by Krista Dillon and supported by the UO Emergency Management & Continuity and IMT Planning Section staff.

- Local / State / National Partnerships and Coordination**
- Lane County Public Health
  - PeaceHealth Medical Group and McKenzie-Willamette Medical Group
  - Lane County Emergency Management
  - Oregon Health Authority
  - Higher Education Coordination Commission
  - Oregon's Public & Private Universities and Community Colleges
  - Oregon Emergency Management
  - National Disaster Resilient Universities (DRU) Network



The **operations section** oversees the branches implementing UO's COVID-19 Health and Safety Operations Plan. Ensuring operations are consistent with the IMT objectives and safety requirements. As issues arise, the operations section quickly coordinates with the planning section to develop adaptive solutions to address the situation.

The UO's All-Hazard Incident Management Team (UO-IMT) provides the command and control infrastructure required to manage the logistical, fiscal, planning, operational, safety, and campus issues related to any and all incidents/emergencies. UO-IMT is made up of the individuals who serve as the primary Incident Commanders and Command and General Staff. The UO follows the requirements set forth by the National Incident Management System (NIMS). Using NIMS enables the university to communicate and coordinate response actions with other jurisdictions and emergency response agencies.

- Student Services & Enrollment Management**
- Housing
  - Dining
  - University Health Services
- IMT Lead: Keith Frazee
- Dean of Students Office**
- Campus Community Support
- IMT Lead: Kris Winter

- Academic & Instruction Operations**  
IMT Lead: Ron Bramhall
- Facilities, Safety & Security**  
IMT Lead: Chuck Triplett
- Instructional Technologies**  
IMT Lead: Jessie Minton
- Campus Events**  
IMT Lead: Rick Haught
- UO IMT Travel Team**

- UO Case Management Team**  
IMT Operations Section Chief (lead)  
University Health Services  
UO Corona Corps  
Environmental Health and Safety  
Human Resources  
Office of the General Counsel  
University Communications

